



UNCSCA

WINTER DANCE 2010

Sound Designer:

Sound Engineer / Drafts Person: Cari Lynn Kreidinger

Assistant Sound Engineer:

Sound Board Operator:

Choreographers:

Stage Manager:

Stage Manager:

Technical Director:

Lighting Designer:

Load In: Sunday, Feb. 7, 2010

Tech: Feb 13-17, 2010

Performances: Feb 18-21, 2010

Approval:

David E. Smith _____

Jason Romney _____

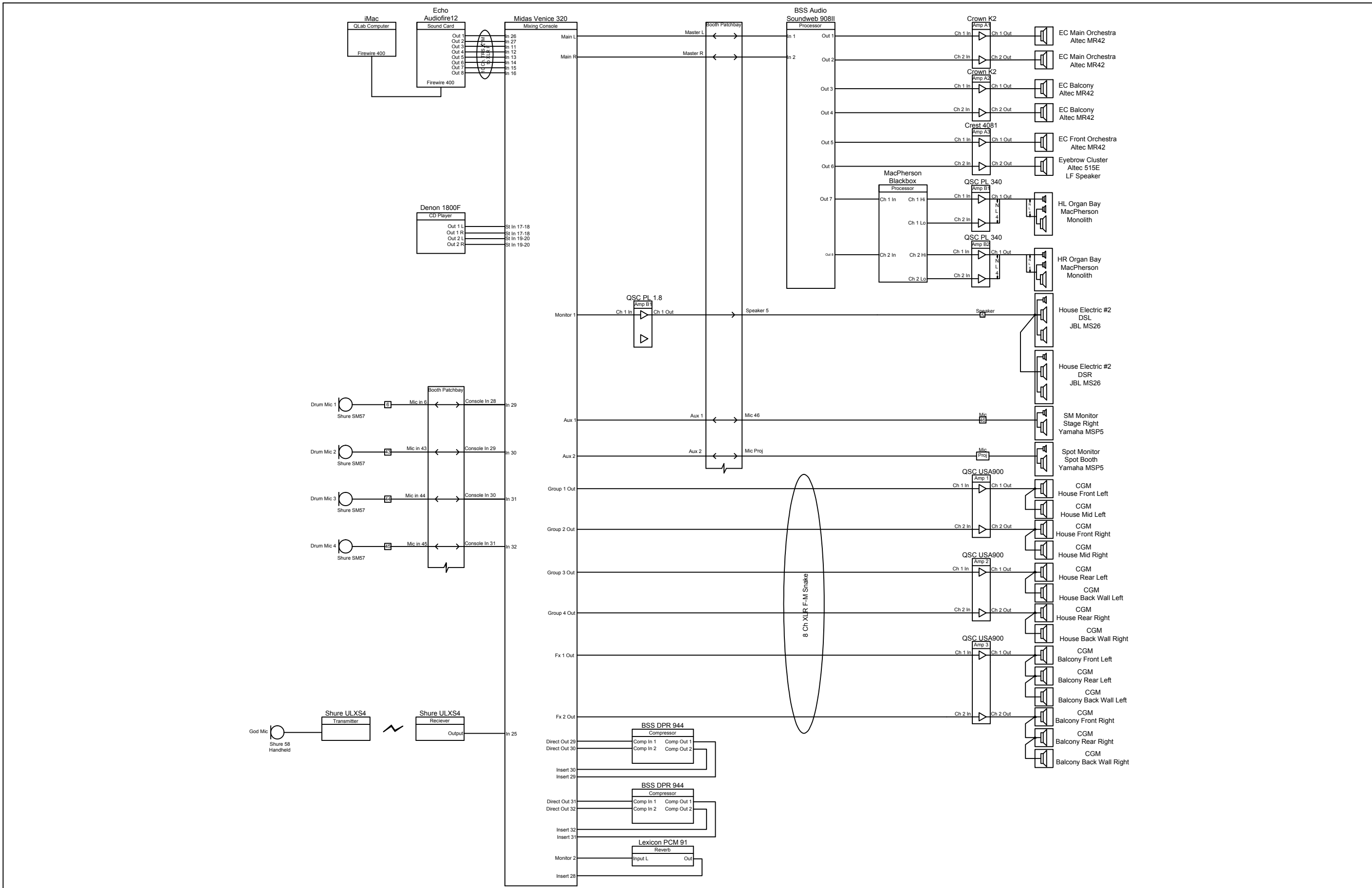



Plate: 1 of 16
Scale: N/A
One Line
Winter Dance The Stevens Center
Choreographer: Various
Sound Designer:
Sound Engineer/ Draftsman: Cari Lynn Kreidinger
Assistant Sound Engineer:
Board Operator:
Performance Dates: 2/18/2010 2/19/2010 2/20/2010 2/21/2010


Winter Dance

Patch Plot Plate

Plate 2 of 15

Denon RCF Remote	8 Pin Mini Din F	8 Pin Mini Din M	Cable	8 Pin Mini Din M	8 Pin Mini Din F	Denon 1800F CD Player	Out 1 L	RCA F	RCA M
							Out 1 R	RCA F	RCA M
							Out 2 L	RCA F	RCA M
							Out 2 R	RCA F	RCA M

ULX 1/SM 58 Wireless Handheld	Wireless RF	Shure ULXS 2	Output	XLR M	XLR F
-------------------------------	-------------	--------------	--------	-------	-------

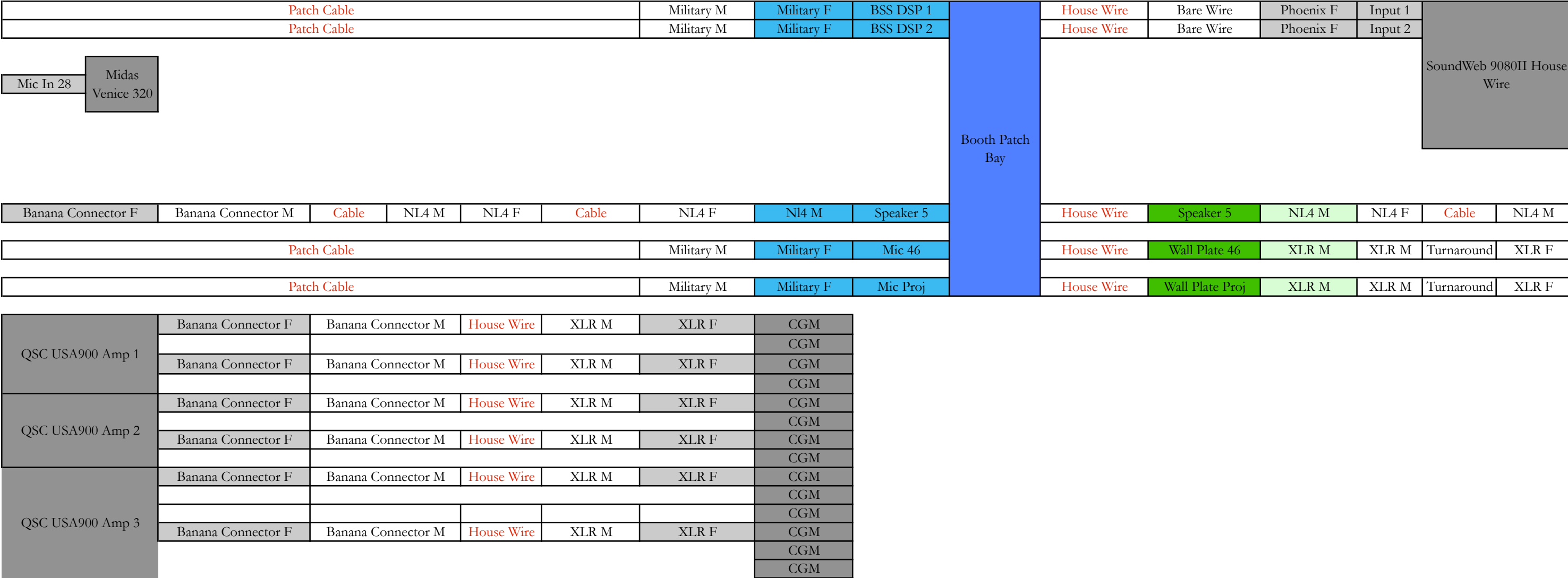
Qlab Computer	Firewire 400 F	Firewire 400 M	Cable	Firewire 400 M	Firewire 400 F	Echo Audio Firewire 12	Out 1	1/4" TRS F	1/4" TRS M
							Out 2	1/4" TRS F	1/4" TRS M
							Out 3	1/4" TRS F	1/4" TRS M
							Out 4	1/4" TRS F	1/4" TRS M
							Out 5	1/4" TRS F	1/4" TRS M
							Out 6	1/4" TRS F	1/4" TRS M
							Out 7	1/4" TRS F	1/4" TRS M
							Out 8	1/4" TRS F	1/4" TRS M

Shure SM57	XLR M	XLR F	Cable	XLR M	XLR F	Wall Plate 6	House Wire	Booth Patch Bay	Mic In 6	Military F	Military M	Patch Cable	Military M	Military F	Console Mic In 29	Booth Patch Bay
Shure SM57	XLR M	XLR F	Cable	XLR M	XLR F	Wall Plate 8	House Wire		Mic In 8	Military F	Military M	Patch Cable	Military M	Military F	Console Mic In 30	
Shure SM57	XLR M	XLR F	Cable	XLR M	XLR F	Wall Plate 43	House Wire		Mic In 43	Military F	Military M	Patch Cable	Military M	Military F	Console Mic In 31	
Shure SM57	XLR M	XLR F	Cable	XLR M	XLR F	Wall Plate 45	House Wire		Mic In 45	Military F	Military M	Patch Cable	Military M	Military F	Console Mic In 32	

RCA M	Cable	1/4" TRS M	1/4" TRS F	St In 17-18 L	Midas Venice 320 Mixing Console	Main Out L	XLR M	XLR F	House Snake	Booth Patch Bay	Military F	Military M	Patch Cable				
RCA M	Cable	1/4" TRS M	1/4" TRS F	St In 17-18 R		Main Out R	XLR M	XLR F	House Snake	Booth Patch Bay	Military F	Military M	Patch Cable				
RCA M	Cable	1/4" TRS M	1/4" TRS F	St In 19-20 L													
RCA M	Cable	1/4" TRS M	1/4" TRS F	St In 19-20 R		Mon 1 Out	XLR M	XLR F	Cable	XLR M	XLR F	Ch 1 In	QSC PowerLite 1.8	Ch 1 Out	Banana Connector F		
XLR F	House Wire	XLR M	XLR F	Mic In 25		Mon 2 Out	XLR M	XLR F	Cable	XLR M	XLR F	PCM 91	XLR M	Cable	XLR F	XLR M	Mic In 28
1/4" TRS M	Snake	XLR M	XLR F	Mic In 1		Aux 1 Out	XLR M	XLR F	House Snake	Booth Patch Bay	Military F	Military M	Patch Cable				
1/4" TRS M		XLR M	XLR F	Mic In 2													
1/4" TRS M		XLR M	XLR F	Mic In 3													
1/4" TRS M		XLR M	XLR F	Mic In 4													
1/4" TRS M		XLR M	XLR F	Mic In 5													
1/4" TRS M		XLR M	XLR F	Mic In 6													
1/4" TRS M		XLR M	XLR F	Mic In 7													
1/4" TRS M		XLR M	XLR F	Mic In 8													
Booth Patch Bay	House Wire	XLR M	XLR F	Mic In 29	Aux 2 Out	XLR M	XLR F	House Snake	Booth Patch Bay	Military F	Military M	Patch Cable					
	House Wire	XLR M	XLR F	Mic In 30	Group 1 Out	1/4" TRS F	1/4" TRS M	Snake	XLR M	XLR F	Ch 1 In	QSC USA900 Amp 1	Banana Connector F				
	House Wire	XLR M	XLR F	Mic In 31	Group 2 Out	1/4" TRS F	1/4" TRS M		XLR M	XLR F	Ch 2 In		Banana Connector F				
	House Wire	XLR M	XLR F	Mic In 32	Group 3 Out	1/4" TRS F	1/4" TRS M		XLR M	XLR F	Ch 1 In	QSC USA900 Amp 2	Banana Connector F				
					Group 4 Out	1/4" TRS F	1/4" TRS M		XLR M	XLR F	Ch 2 In		Banana Connector F				
					FX Out 1	1/4" TRS F	1/4" TRS M		XLR M	XLR F	Ch 1 In	QSC USA900 Amp 3	Banana Connector F				
					FX Out 2	1/4" TRS F	1/4" TRS M		XLR M	XLR F	Ch 2 In		Banana Connector F				

Winter Dance

Patch Plot Plate



Winter Dance

Patch Plot Plate

SoundWeb 9080II House Wire	Output 1	Phoenix F	Phoenix M	House Wire	XLR M	XLR F	Ch 1 In	Crown K2	Ch 1 Out	Binding Post	Bare Wire	House Wire	Bare Wire	Terminal Block	Input
	Output 1	Phoenix F	Phoenix M	House Wire	XLR M	XLR F	Ch 2 In		Ch 2 Out	Binding Post	Bare Wire	House Wire	Bare Wire	Terminal Block	Input
	Output 1	Phoenix F	Phoenix M	House Wire	XLR M	XLR F	Ch 1 In	Crown K2	Ch 1 Out	Binding Post	Bare Wire	House Wire	Bare Wire	Terminal Block	Input
	Output 1	Phoenix F	Phoenix M	House Wire	XLR M	XLR F	Ch 2 In		Ch 2 Out	Binding Post	Bare Wire	House Wire	Bare Wire	Terminal Block	Input
	Output 1	Phoenix F	Phoenix M	House Wire	XLR M	XLR F	Ch 1 In	Crest 4081	Ch 1 Out	Binding Post	Bare Wire	House Wire	Bare Wire	Terminal Block	Input
	Output 1	Phoenix F	Phoenix M	House Wire	XLR M	XLR F	Ch 2 In		Ch 2 Out	Binding Post	Bare Wire	House Wire	Bare Wire	Terminal Block	Input
	Output 1	Phoenix F	Phoenix M	House Wire	XLR M	XLR F	Ch 1 In	MacPherson Blackbox	Ch 1 Hi	XLR M	XLR F	House Wire	XLR M	XLR F	Ch 1 In
	Output 1	Phoenix F	Phoenix M	House Wire	XLR M	XLR F	Ch 2 In		Ch 1 Lo	XLR M	XLR F	House Wire	XLR M	XLR F	Ch 2 In
Output 1	Phoenix F	Phoenix M	House Wire	XLR M	XLR F	Ch 1 In	Ch 2 Hi		XLR M	XLR F	House Wire	XLR M	XLR F	Ch 1 In	
Output 1	Phoenix F	Phoenix M	House Wire	XLR M	XLR F	Ch 2 In	Ch 2 Lo		XLR M	XLR F	House Wire	XLR M	XLR F	Ch 2 In	

Cable	NL4 F	NL4 M	JBL MS26	Ouput	NL4 M	NL4 F	Cable	NL4 F	NL4 M	Input	JBL MS26
-------	-------	-------	----------	-------	-------	-------	-------	-------	-------	-------	----------

XLR F	Cable	XLR M	XLR F	Yamaha MSP5
-------	-------	-------	-------	-------------

XLR F	Cable	XLR M	XLR F	Yamaha MSP5
-------	-------	-------	-------	-------------

Input	Altec 288-16K	Altec MR42								
Input	Altec 288-16K	Altec MR42								
Input	Altec 288-16K	Altec MR42								
Input	Altec 288-16K	Altec MR42								
Input	Altec 288-16K	Altec MR42								
Input	Altec 515E LF Speaker	Altec MR42								
Ch 1 In	QSC PL340	Ch 1 & 2 Out	NL4 M	NL4 F	House Wire	NL4 F	NL4 M	Input	MacPherson Monolith	
Ch 2 In										
Ch 1 In	QSC PL340	Ch 1 & 2 Out	NL4 M	NL4 F	House Wire	NL4 F	NL4 M	Input	MacPherson Monolith	
Ch 2 In										

Plate 4 of 15

MIDAS VENICE 320

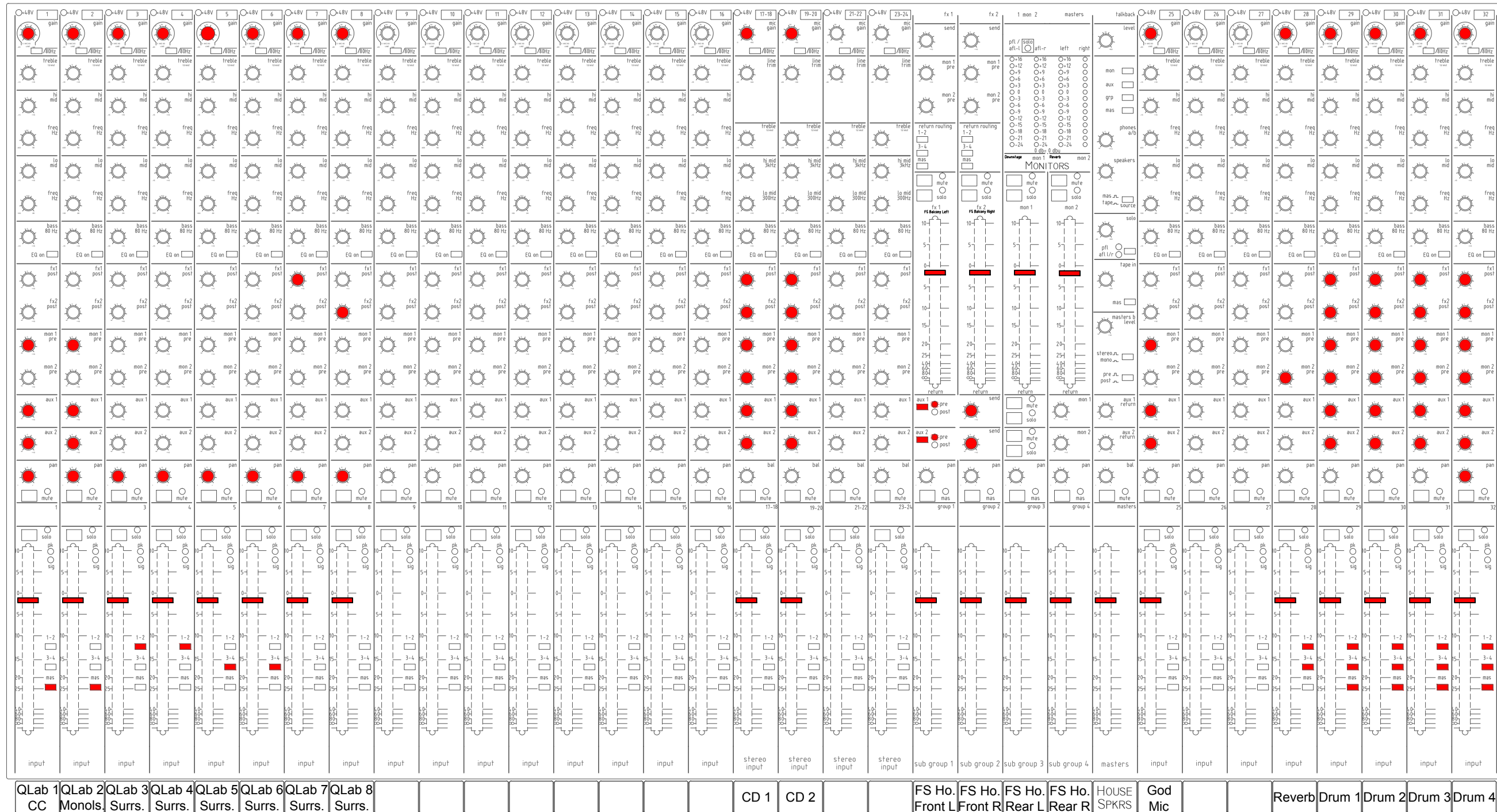


Plate: 5 of 15

Scale: N/A

Desk Plot

Winter Dance The Stevens Center

Choreographer:
Various

Sound Designer:

Sound Engineer/
Draftsman:
Cari Lynn Kreidinger

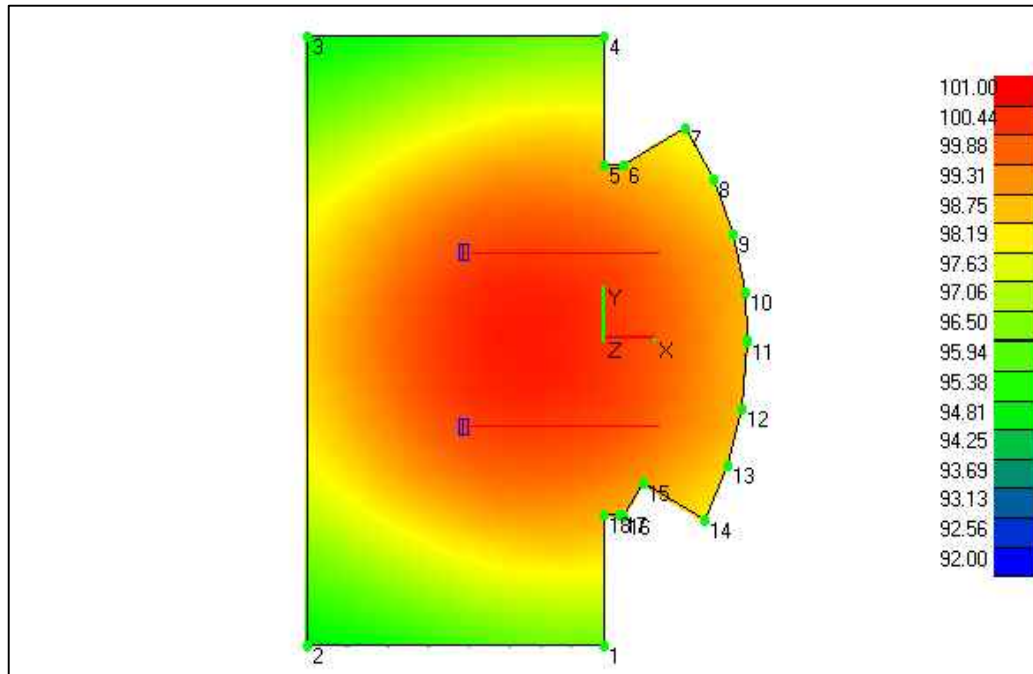
Assistant
Sound Engineer:

Board Operator:

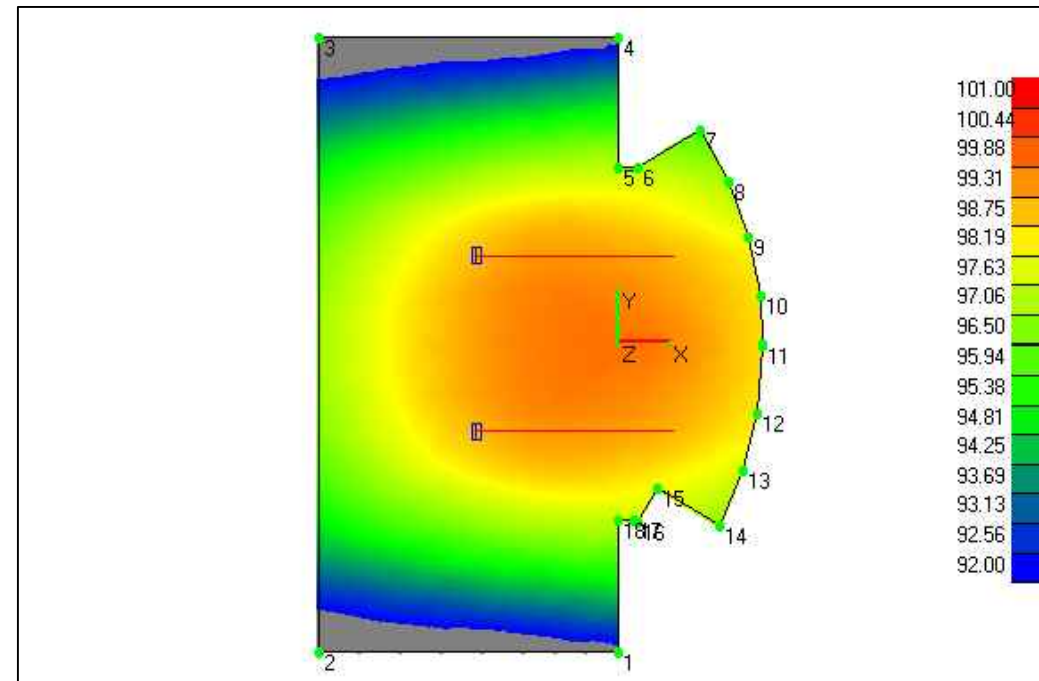
Performance Dates:
2/18/2010
2/19/2010
2/20/2010
2/21/2010



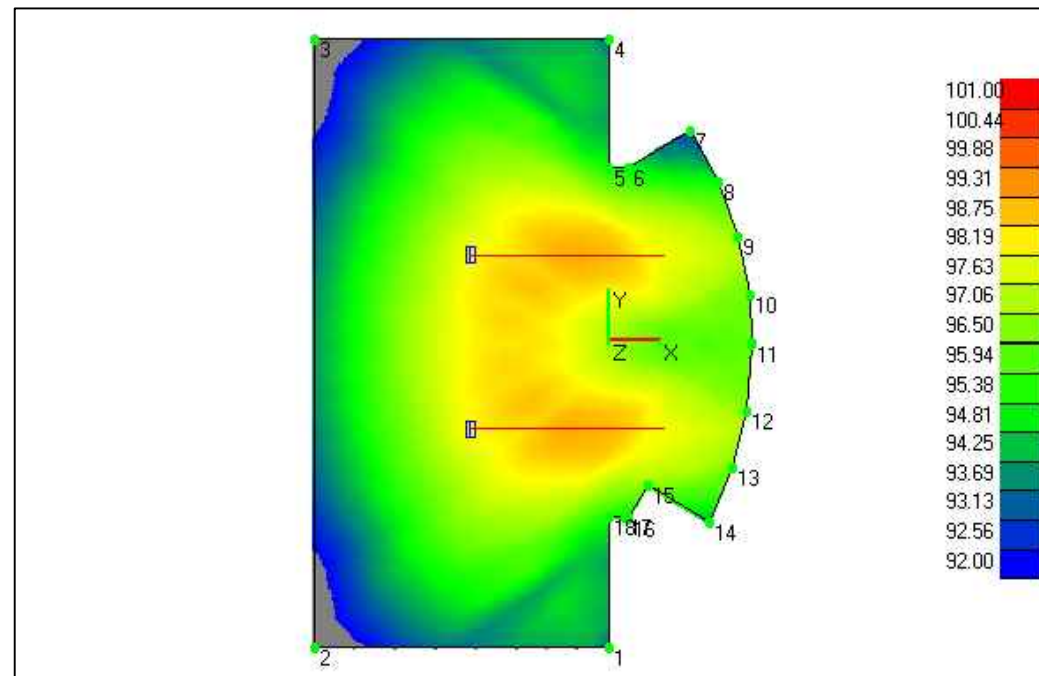
Onstage Monitoring



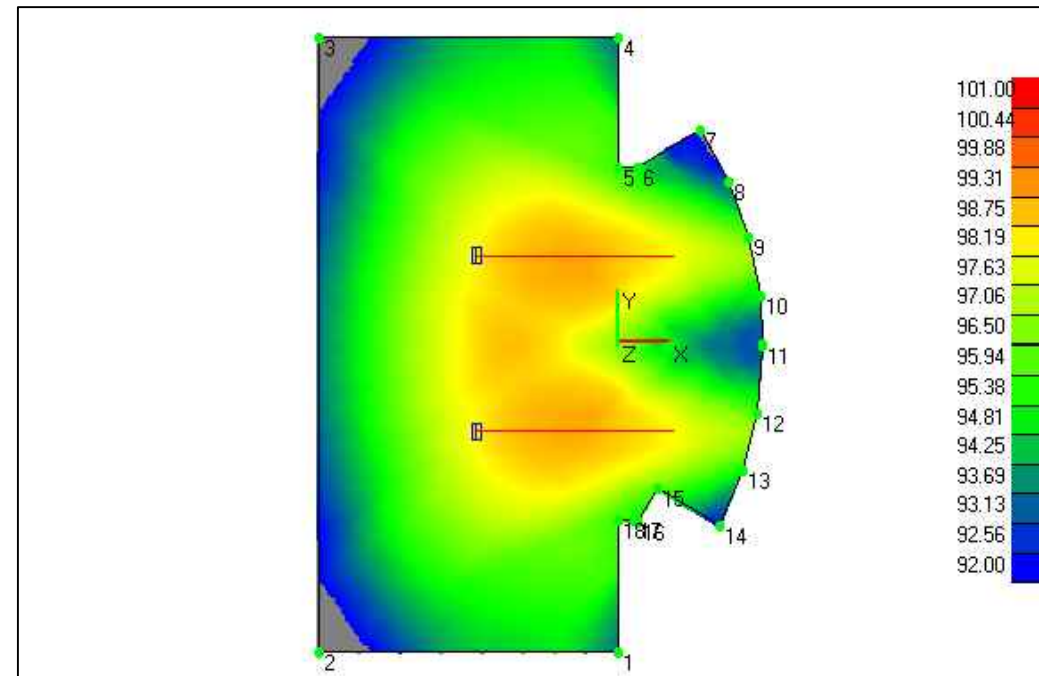
250 Htz



500 Htz



1 kHz



2 kHz

Plate: 6 of 15

Scale: N/A

LARA

Winter
Dance
The
Stevens
Center

Choreographer:
Various

Sound Designer:

Sound Engineer/
Draftsman:
Cari Lynn Kreidinger

Assistant
Sound Engineer:

Board Operator:

Performance Dates:
2/18/2010
2/19/2010
2/20/2010
2/21/2010

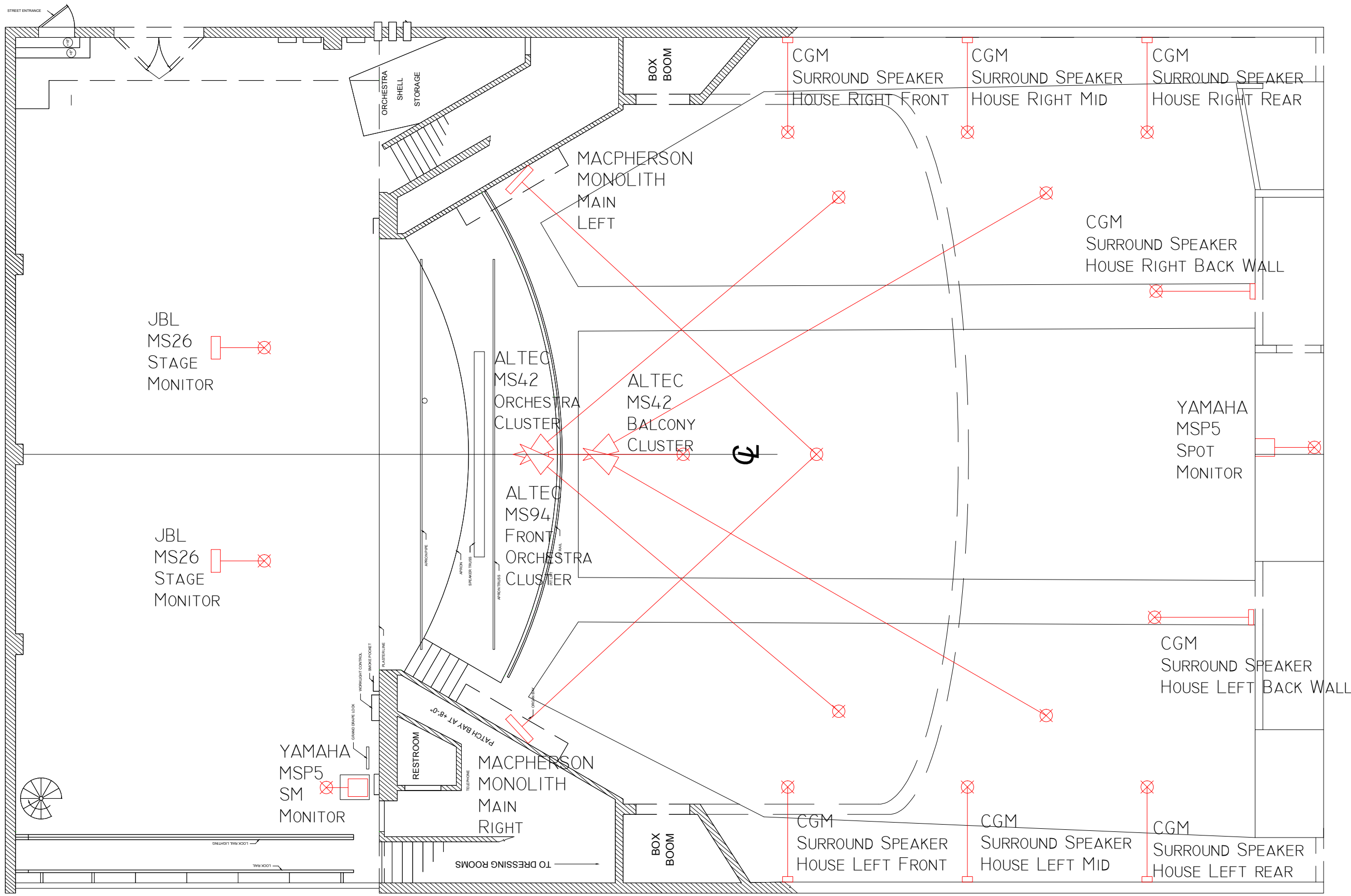


Plate: 7 of 15

Scale: N/A

Speaker Plot Groundplan

Winter Dance

The Stevens Center

Choreographer:
Various

Sound Designer:

Sound Engineer/
Draftsman:
Cari Lynn Kreidinger

Assistant
Sound Engineer:

Board Operator:

Performance Dates:
2/18/2010
2/19/2010
2/20/2010
2/21/2010



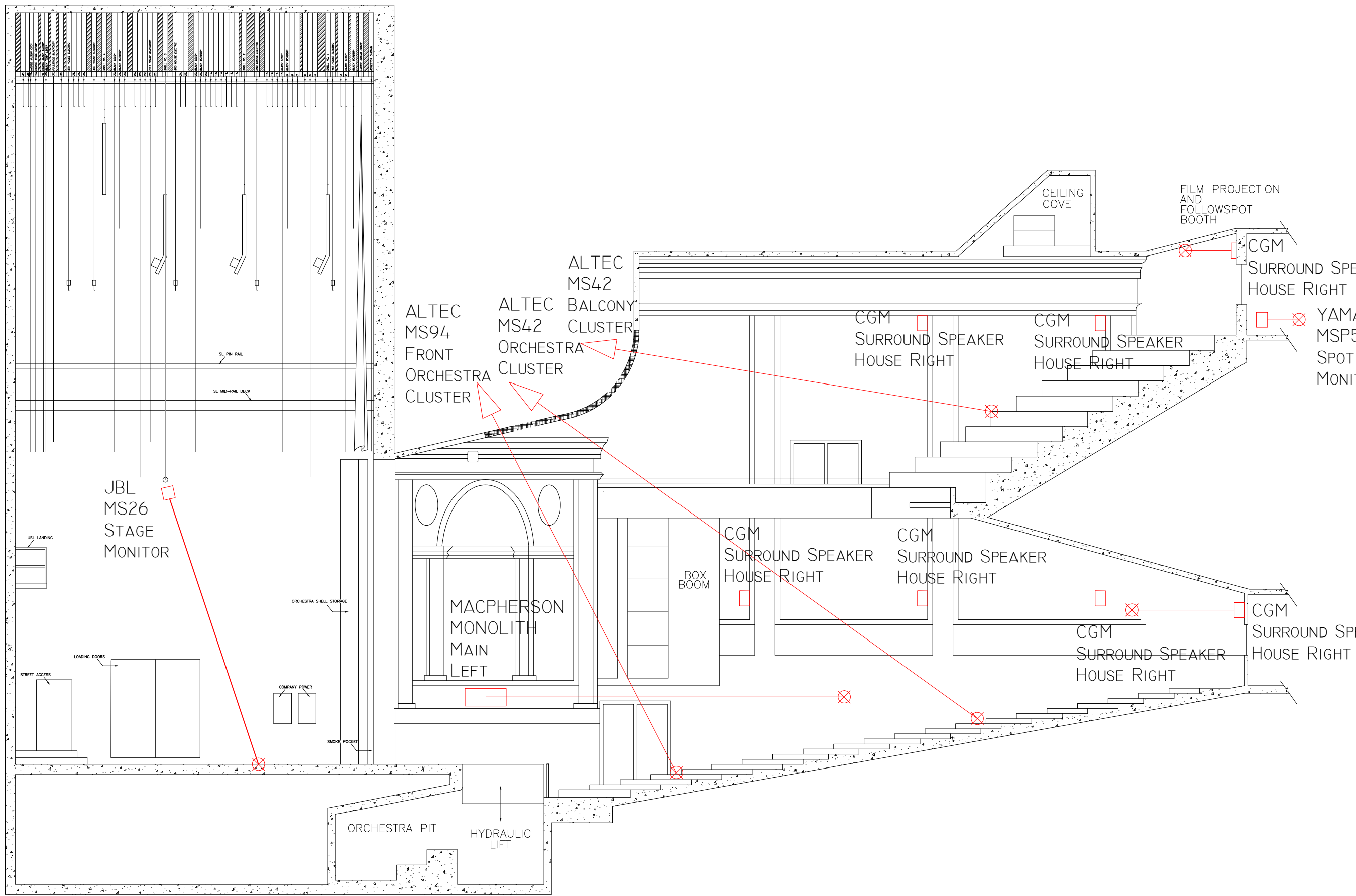


Plate: 8 of 15

Scale: N/A

Speaker Plot Section

Winter Dance

The Stevens Center

Choreographer:
Various

Sound Designer:

Sound Engineer/
Draftsman:
Cari Lynn Kreidinger

Assistant
Sound Engineer:

Board Operator:

Performance Dates:
2/18/2010
2/19/2010
2/20/2010
2/21/2010



Power Diagram

Winter Dance The Stevens Center

Choreographer:
Various

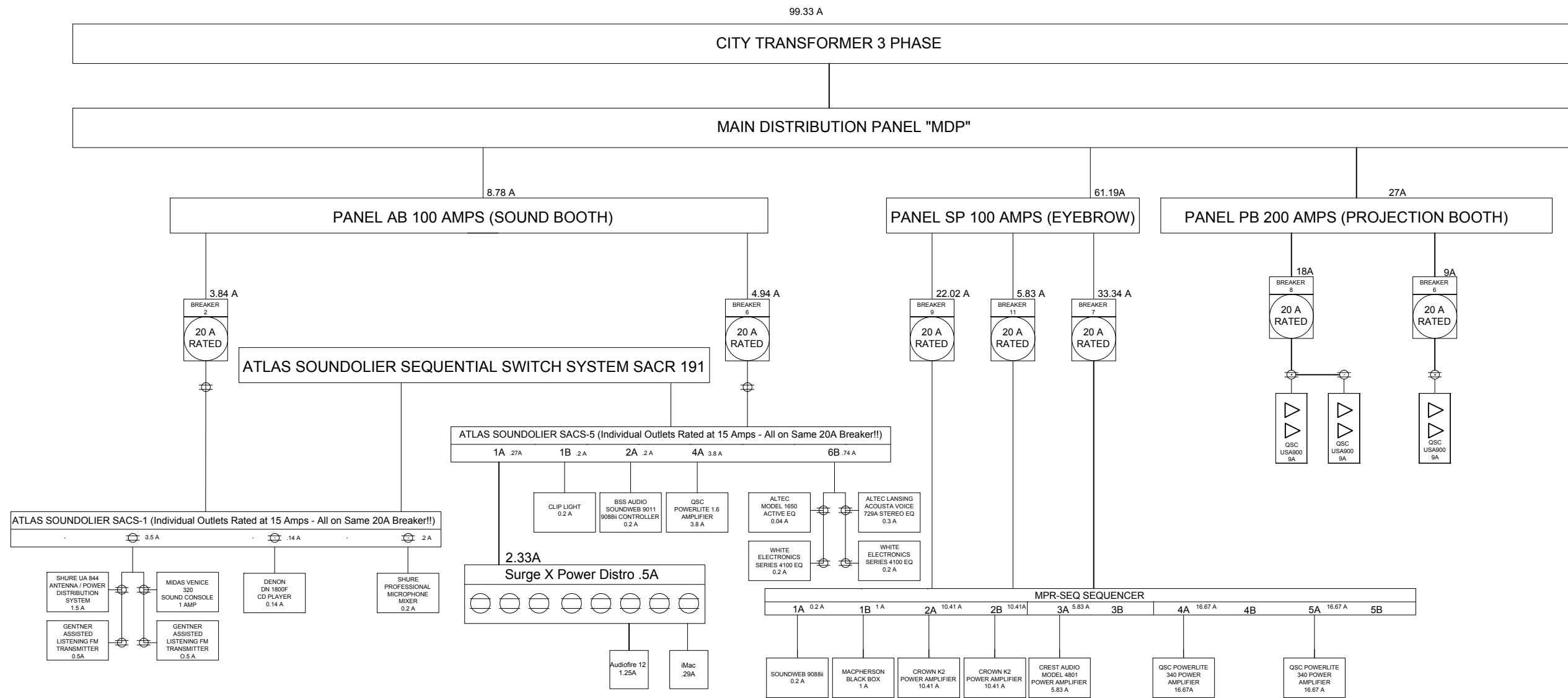
Sound Designer:

Sound Engineer/
Draftsman:
Cari Lynn Kreidinger

Assistant
Sound Engineer:

Board Operator:

Performance Dates:
2/18/2010
2/19/2010
2/20/2010
2/21/2010



Rigging Diagram

Winter Dance The Stevens Center

Choreographer:
Various

Sound Designer:

Sound Engineer/
Draftsman:
Cari Lynn Kreidinger

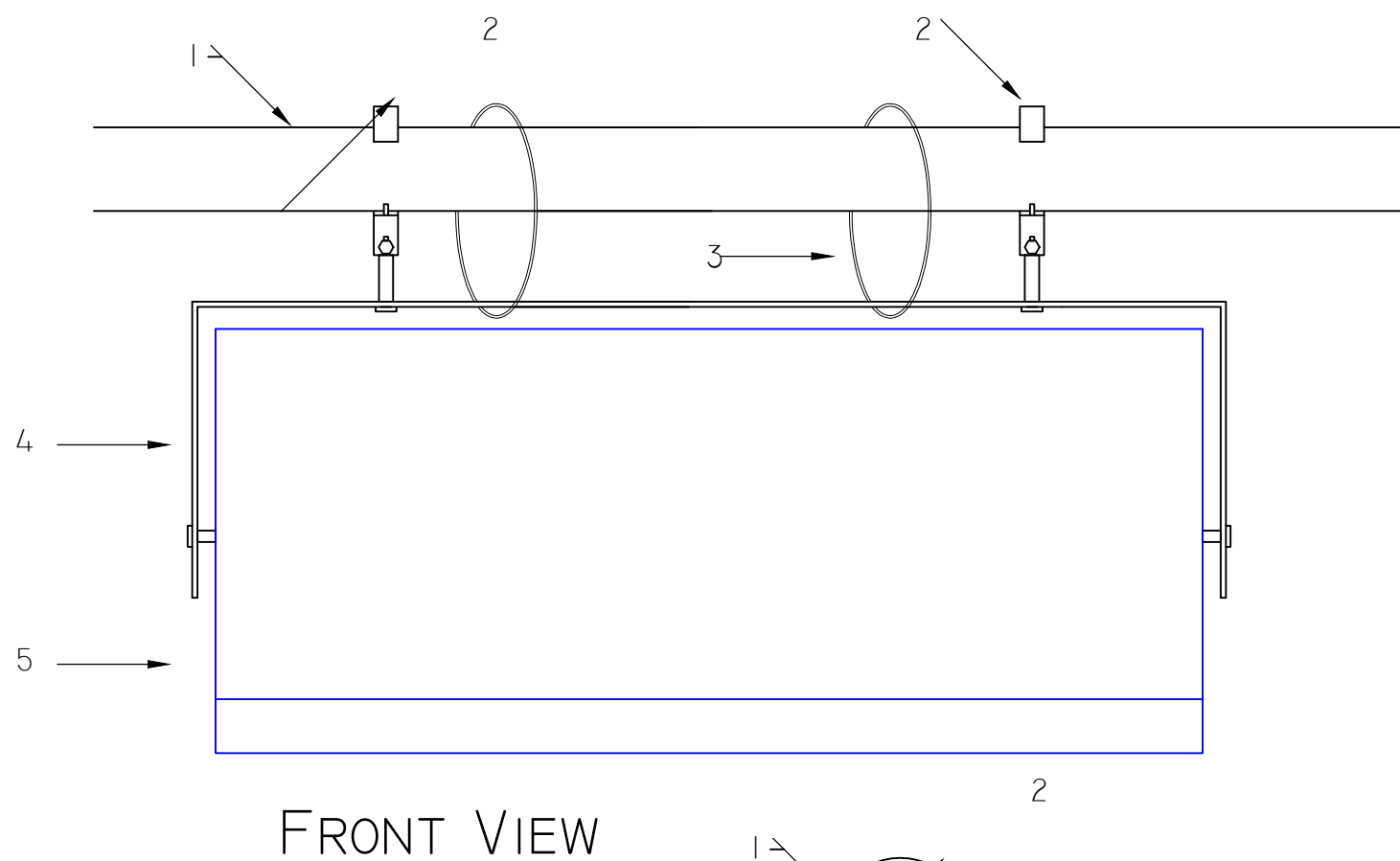
Assistant
Sound Engineer:

Board Operator:

Performance Dates:
2/18/2010
2/19/2010
2/20/2010
2/21/2010

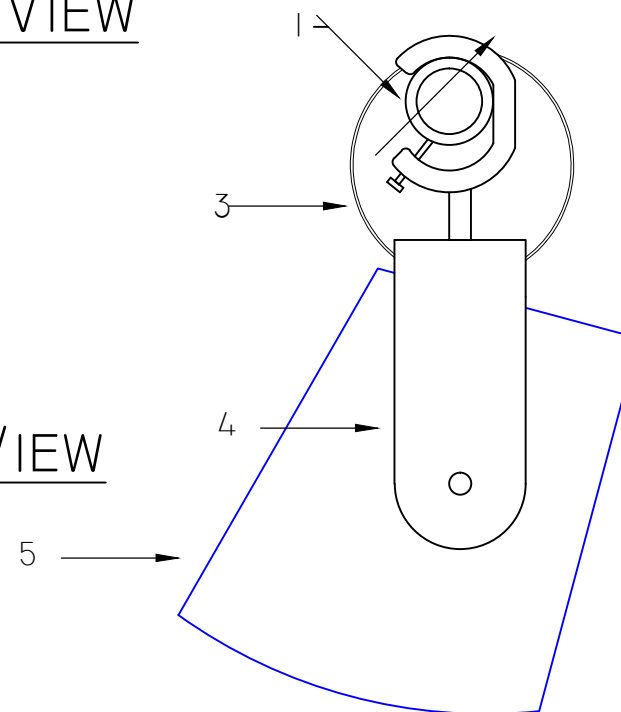
NOTES:

1. (2) SEPARATE BATTENS (HOUSE ELECTRICS 2 & 3)
2. (2) C-CLAMPS
SWL: 600 LBS.
3. (4) SAFETY CABLES (MIN. 1/16" AC)
4. (1) JBL MS26 YOKE BRACKET
(PER SPEAKER)
5. (2) JBL MS26 LOUDSPEAKER
WEIGHT: 18 LBS.



FRONT VIEW

SIDE VIEW



Clear Com Tech

Winter Dance The Stevens Center

Choreographer:
Various

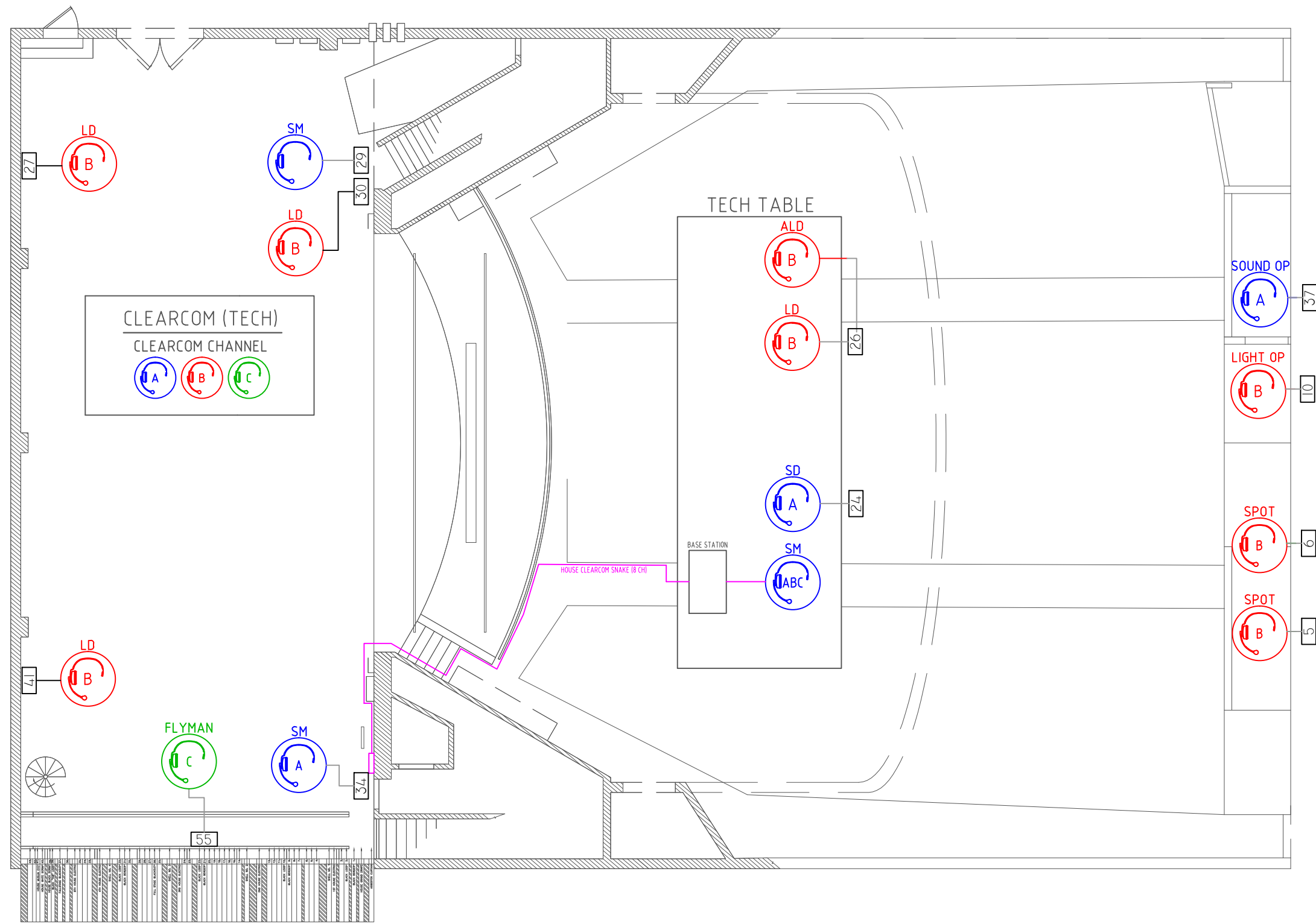
Sound Designer:

Sound Engineer/
Draftsman:
Cari Lynn Kreidinger

Assistant
Sound Engineer:

Board Operator:

Performance Dates:
2/18/2010
2/19/2010
2/20/2010
2/21/2010



Clear Com Run

Winter Dance The Stevens Center

Choreographer:
Various

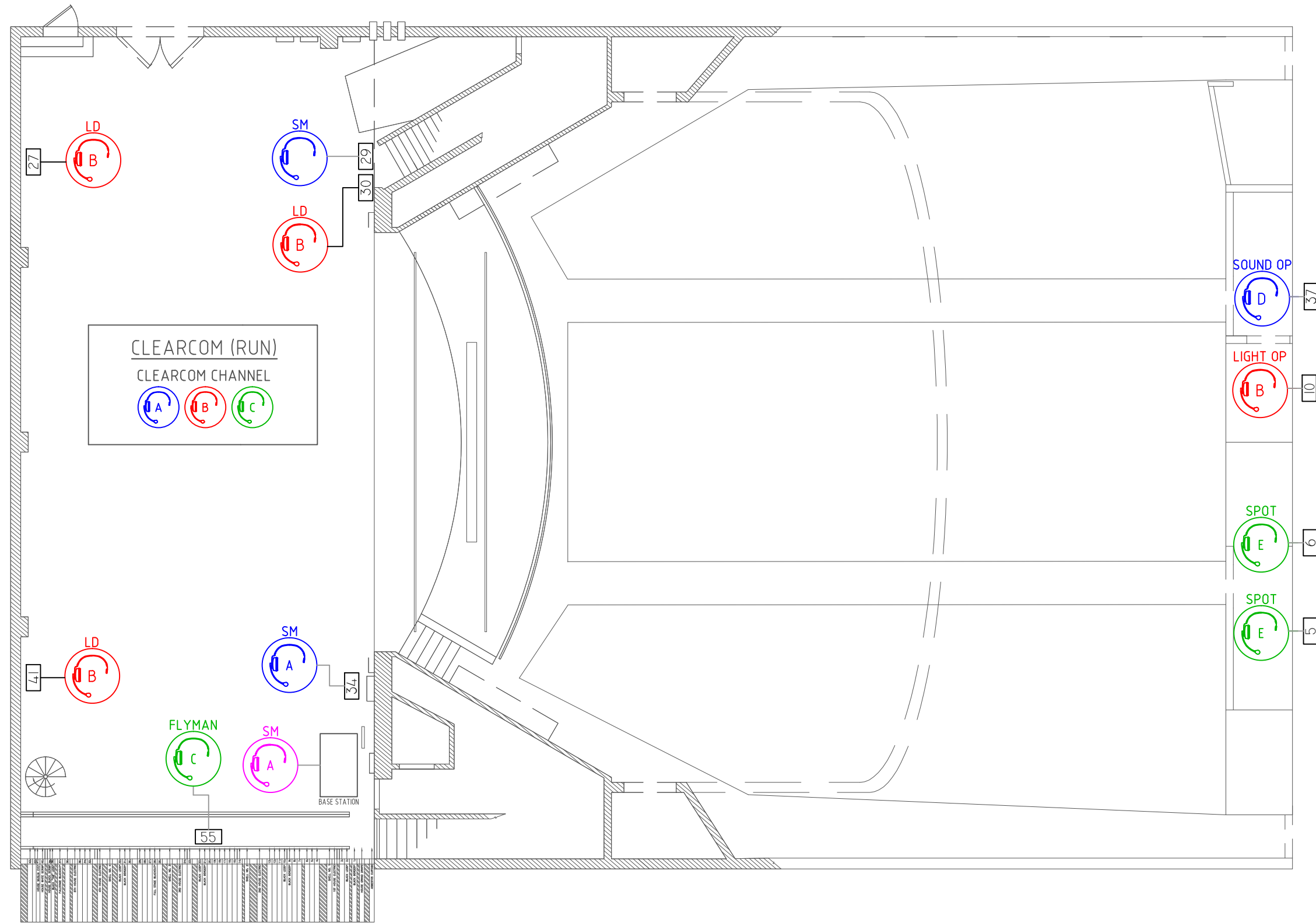
Sound Designer:

Sound Engineer/
Draftsman:
Cari Lynn Kreidinger

Assistant
Sound Engineer:

Board Operator:

Performance Dates:
2/18/2010
2/19/2010
2/20/2010
2/21/2010



Winter Dance Communications Distribution: Tech (02/05/2010 - 02/17/2010)

Radio Distribution		
Radio #	Name	Dept
1	Tai Renfrow	SM
2	Jackie Filer	SM
3	Katy Bressman	SM
SC 1	Kate Brown	SND
SC 2	Cari Kreidinger	SND
SC 3	Scott Haimes	SND
4	Wade Jolly	TD
5	Tim Sanford	TD
7	Adam Cavanaugh	LX
8	Luke Johnson	LX
9	Kevin Kirkpatrick	LX
10	Kyle Grant	LX

Clear-Com Distribution						
Name	Dept	Chan.	Location	Plate #	Conn. Type	Length
Tai Renfrow	SM	SM	Deck DSR	34	Direct	50'
Jackie Filer	SM	SM	Tech Table	Base	Direct	N/A
Katy Bressman	SM	SM	Deck DSL	29	Direct	50'
Kate Brown	SND	SND	Tech Table	24	Direct	25'
Max Bushman	SND	SND	Snd Booth	37	Direct	25'
Tim Sanford	TD	DECK	Fly Rail	55	Direct	50'
Lighting	LX	LX	Tech Table	25	Direct	25'
Lighting	LX	LX	Tech Table	25	1 Off	15'
Lighting	LX	LX	Spot Booth	5	Direct	50'
Lighting	LX	LX	Spot Booth	6	Direct	50'
Lighting	LX	LX	Deck USR	41	Direct	50'
Lighting	LX	LX	Deck USL	27	Direct	50'
Lighting	LX	LX	Deck DSL	30	Direct	50'
Lighting	LX	LX	Light Booth	9	Direct	25'

Winter Dance Communications Distribution: Run (02/18/2010 - 02/21/2010)

Radio Distribution		
Radio #	Name	Dept
1	Tai Renfrow	SM
2	Jackie Filer	SM
3	Katy Bressman	SM
SC 1	Kate Brown	SND
SC 2	Cari Kreidinger	SND
SC 3	Scott Haimes	SND
4	Wade Jolly	TD
5	Tim Sanford	TD
7	Adam Cavanaugh	LX
8	Luke Johnson	LX
9	Kevin Kirkpatrick	LX

Clear-Com Distribution						
Name	Dept	Chan.	Location	Plate #	Conn. Type	Length
Tai Renfrow	SM	SM	DR	34	Direct	50'
Jackie Filer	SM	SM	DR	Base	Direct	N/A
Katy Bressman	SM	SM	DL	29	Direct	50'
Max Bushman	SND	SND	Snd Booth	37	Direct	25'
Tim Sanford	TD	DECK	Fly Rail	55	Direct	50'
Lighting	LX	LX	Spot Booth	5	Direct	50'
Lighting	LX	LX	Spot Booth	6	Direct	50'
Lighting	LX	LX	Deck USR	41	Direct	50'
Lighting	LX	LX	Deck USL	27	Direct	50'
Lighting	LX	LX	Deck DSL	30	Direct	50'
Lighting	LX	LX	Light Booth	9	Direct	25'

Totals	
Radios	10
SC Radios	3
CC Belt Packs	13
CC Headsets	13
15' XLR	1
25' XLR	2
50' XLR	8

Clear-Com Channels	
Stage Mgmt	A
Lighting	B
Scenery	C
Sound	D

Winter Dance

Plate 14 of 14
 Pulled by Cari Lynn Kreidinger 2/7/10
 Returned by Cari Lynn Kreidinger 2/21/10

Equipment List

Loudspeakers

Qty	Item	Notes	Position	Location
14	CGM Loudspeaker	Surround Sound	Everywhere	Stevens Center
2	MacPherson Monolith	Main L/R	L/R Organ Bay	Stevens Center
4	Altec MR42	Main Cluster	Eyebrow	Stevens Center
2	Altec MR94	Orchestra/Sub	Eyebrow	Stevens Center
3	Yamaha MSP5	Powered Monitor	SM/SpotOp/Choral	Stevens Center
2	JBL MS26	Onstage Monitor	Electric #3	Sound Shop

Amps

Qty	Item	Notes	Position	Location
1	QSC PowerLite 1.8	Onstage Monitors	Stage Right	Sound Shop
3	QSC USA900	CGMs	Film Amp Room	Stevens Center
2	Crown K2		Booth	Stevens Center
1	Crest 4081		Booth	Stevens Center
1	MacPherson BlackBox		Booth	Stevens Center

Cables

Qty	Item	Notes	Position	Location
1	FireWire 400 M-M	Qlab Computer	Booth	Sound Shop
10	XLR F-M	15'		Sound Shop
4	XLR F-M	30'		Sound Shop
5	XLR F-M	25'		Stevens Center
3	XLR F-M	15'		Stevens Center
4	XLR F-M	50'		Stevens Center
2	NL4	10'		Sound Shop
2	NL4	50'		Sound Shop
1	NL4	100'		Sound Shop
2	NL4 - Banana Connector	Amp to Patch	Booth	Sound Shop
2	NL4 Barrel Connector	Amp to Patch		Sound Shop
2	1/4" TRS M - XLR M	Board to Amp		Sound Shop
1	8 Ch Snake	Film System		David
2	NL4 W	Film System		Sound Shop
6	XLR M to TRS 1/4" M			Sound Shop
6	XLR F to TRS 1/4" M			Sound Shop

Rigging Hardware

Qty	Item	Notes	Position	Location
4	C Clamps	JBL MS26	Electric #3	Sound Shop
2	JBL MS26 Yoke	JBL MS26	Electric #3	Sound Shop
2	Safety Cables	JBL MS26	Electric #3	Sound Shop

Devices

Qty	Item	Notes	Position	Location
1	Midas Venice 320	Mixing Console	Booth	Stevens Center
1	Denon RC45 Remote	CD Player	Booth	Stevens Center
1	Denon 1800F	CD Player	Booth	Stevens Center
1	ULX SM58	God Mic	SM	Stevens Center
1	ULXS	Reciever	Booth	Stevens Center
1	Qlab Computer	Playback	Booth	Stevens Center
1	Echo AudioFire 12	Playback	Booth	Stevens Center
2	Shure SM 57	Drum Mic	Stage Right	Sound Shop
1	SoundWeb 9080II	House Speakers	Booth	Stevens Center
2	BSS DPR 944	Compressor		Sound Shop
1	PCM 91	Reverb		Sound Shop

Miscellaneous

Qty	Item	Notes	Position	Location
2	Power Strips	Tech Table		Sound Shop
1	Black Gaff			David
1	Board Tape		Booth	Cari Kreidinger
6	Communication Radios			Stevens Center
8	Little Lite			Stevens Center
	Tie Line		Hidden	Secret
1	Airport Extreme	Qlab Scr. Share		Sound Shop
2	Long Ethernet Cable			Sound Shop
1	Polarity Checker			Sound Shop

Time Sheets

Green = Estimated Time
 Red = Actual Time
 Orange = Weekly Average

Date	8am	9am	10am	11am	12pm	1pm	2pm	3pm	4pm	5pm	6pm	7pm	8pm	9pm	10pm	11pm
1/8/10							PSE Package									
							PSE Package									
	Estimated Week Total = 2 hrs			Week Total = 2 hrs			Weekly Average = 2 hrs									
1/13/10							PSE Package									
							PSE Package									
	Estimated Week Total = 2 hrs			Week Total = 2 hrs			Weekly Average = 2 hrs									
1/19/10				PSE Package					PSE Package							
				PSE Package					PSE Package							
1/20/10							PSE Package									
							PSE Package									
1/21/10				PSE Package					PSE Package							
				PSE Package					PSE Package							
1/22/10							PSE Package									
							PSE Package									
1/23/10											PSE Package					
											PSE Package					
1/24/10											PSE Package					
											PSE Package					
	Estimated Week Total = 21 hrs			Week Total = 24 hrs			Weekly Average = 13 hrs									
1/27/10							PSE Package									
							PSE Package									
	Estimated Week Total = 4 hrs			Week Total = 4 hrs			Weekly Average = 8.5hrs									
2/5/10							Lay Snake									
							Lay Snake									
	Estimated Week Total = 4 hrs			Week Total = 0hrs			Weekly Average = 4.25hrs									
2/7/10											Load In					
											Load In/Lay Snake					
2/8/10							Quiet Time				Quiet Time					
							Quiet Time				Quiet Time					
2/10/10							Work Time				Work Time					
							Quiet Time				Work Time					
2/11/10							Quiet Time				Work Time					
							Quiet Time				Work Time					
2/12/10											Level Test			Work Time		
											Level Test / Spacing					
2/13/10	Work Time		BDWD Spacing				BDWD Tech		LP Spacing		LP Tech					
			Quiet Time				BDWD Tech		LP Spacing		LP Tech					
	Estimated Week Total = 33.5 hrs			Week Total = 45hrs			Weekly Average = 24.625hrs									
2/14/10	Work Time		LI Spacing				LI Tech		MMDG Spacing		MMDG Tech			Notes		
	Work Time		LI Spacing				LI Tech		MMDG Spacing		MMDG Tech					
2/15/10							Crew Notes		Open		Set Up		1st Dress		Notes	
							Work Time						1st Dress			

For: Cari Kreidinger

Time Sheets

Green = Estimated Time
 Red = Actual Time
 Orange = Weekly Average

Date	8am	9am	10am	11am	12pm	1pm	2pm	3pm	4pm	5pm	6pm	7pm	8pm	9pm	10pm	11pm	
2/16/10												1/2h	2nd Dress		Notes		
													2nd Dress				
2/17/10												1/2h	Final Dress		Notes		
													Final dress				
2/18/10												1/2h	1st Performance		Notes		
													1st Performance				
2/19/10												1/2h	2nd Performance		Notes		
													2nd Performance				
2/20/10		Festival of Dance Tech					Festival of Dance Tech					Set Up	1/2h	3rd Performance		Notes	
		Festival of Dance Tech					Festival of Dance Tech							3rd Performance			
	Estimated Week Total = 50 hrs			Week Total = 50hrs			Weekly Average = 37hrs										
2/21/10							Set Up	1/2h	Final Perform.			1/2h	Fes. Of Dance Perform.		Strike		
							Final Performance					Festival of Dance Performance/Strike/Restore					
2/22/10							Restore										
	Estimated Week Total = 10.5 hrs			Week Total = 10hrs			Weekly Average = 23.5hrs										

For:

Time Sheets

Green = Estimated Time
 Red = Actual Time
 Orange = Weekly Average

Date	8am	9am	10am	11am	12pm	1pm	2pm	3pm	4pm	5pm	6pm	7pm	8pm	9pm	10pm	11pm
1/8/10							PSE Package									
							PSE Package									
	Estimated Week Total = 2 hrs			Week Total = 2 hrs			Weekly Average = 2 hrs									
1/13/10							PSE Package									
							PSE Package									
	Estimated Week Total = 2 hrs			Week Total = 2 hrs			Weekly Average = 2 hrs									
1/20/10							PSE Package									
							PSE Package									
1/24/10																
	Estimated Week Total = 4.5 hrs			Week Total = 4.5 hrs			Weekly Average = 5.5 hrs									
2/5/10							Lay Snake									
	Estimated Week Total = 4 hrs			Week Total = 0hrs			Weekly Average = 2.7hrs									
2/7/10												Load In				
												Load In				
2/10/10							Work Time					Work Time				
							Work Time					Work Time				
2/11/10												Work Time				
												Work Time				
2/12/10												Level Test		Work Time		
												Level Test/BDWD Spacing				
2/13/10	Work Time		BDWD Spacing				BDWD Tech	LP Spacing				LP Tech				
			Work Time				BDWD Tech	LP Spacing				LP Tech				
	Estimated Week Total = 33.5 hrs			Week Total = 30.5hrs			Weekly Average = 16.625hrs									
2/14/10	Work Time		LI Spacing				LI Tech	MMDG Spacing				MMDG Tech		Notes		
			LI Spacing				LI Tech	MMDG Spacing				MMDG Tech				
2/15/10							Crew Notes	Open				Set Up	1st Dress	Notes		
												1st Dress				
2/16/10												1/2h	2nd Dress	Notes		
												2nd Dress				
2/17/10												1/2h	Final Dress	Notes		
												Final Dress				
2/18/10												1/2h	1st Performance	Notes		
												1st Performance				
2/19/10												1/2h	2nd Performance	Notes		
												2nd Performance				
2/20/10			Festival of Dance Tech				Festival of Dance Tech					Set Up	1/2h	3rd Performance	Notes	
			Festival of Dance Tech				Festival of Dance Tech					3rd Performance				
	Estimated Week Total = 50 hrs			Week Total = 37hrs			Weekly Average = 26.8hrs									
2/21/10							Set Up	1/2h	Final Perform.			1/2h	Fes. Of Dance Perform.	Strike		
							Final Performance						Festival of Dance Performance/Strike/Restore			

For:

Time Sheets

Green = Estimated Time

Red = Actual Time

Orange = Weekly Average

Date	8am	9am	10am	11am	12pm	1pm	2pm	3pm	4pm	5pm	6pm	7pm	8pm	9pm	10pm	11pm
2/22/10							Restore									
	Estimated Week Total = 10.5 hrs			Week Total =10 hrs			Weekly Average = 18.5hrs									

For:

Time Sheets

Green = Estimated Time
 Red = Actual Time
 Orange = Weekly Average

Date	8am	9am	10am	11am	12pm	1pm	2pm	3pm	4pm	5pm	6pm	7pm	8pm	9pm	10pm	11pm
2/7/10											Load In					
											Load In					
2/8/10							Quiet Time				Quiet Time					
							Quiet Time				Quiet Time					
2/10/10							Work Time				Work Time					
							Work Time				Work Time					
2/11/10											Work Time					
											Work Time					
2/12/10											Level Test		Work Time			
											Level Test BDWD Spacing					
2/13/10	Work Time		BDWD Spacing			BDWD Tech		LP Spacing			LP Tech					
		Work Time			BDWD Tech		LP Spacing			LP Tech						
	Estimated Week Total = 33.5 hrs			Week Total = 37hrs			Weekly Average = 37hrs									
2/14/10	Work Time		LI Spacing			LI Tech		MMDG Spacing			MMDG Tech		Notes			
		Work Time		LI Spacing			LI Tech		MMDG Spacing			MMDG Tech				
2/15/10							Crew Notes		Open		Set Up	1st Dress		Notes		
											1st Dress					
2/16/10											1/2h	2nd Dress		Notes		
											2nd Dress					
2/17/10											1/2h	Final Dress		Notes		
											Final dress					
2/18/10											1/2h	1st Performance		Notes		
											1st Performance					
2/19/10											1/2h	2nd Performance		Notes		
											2nd Performance					
2/20/10		Festival of Dance Tech				Festival of Dance Tech				Set Up	1/2h	3rd Performance		Notes		
		Festival of Dance Tech				Festival of Dance Tech				3rd Performance						
	Estimated Week Total = 50 hrs			Week Total = 49hrs			Weekly Average = 43hrs									
2/21/10							Set Up	1/2h	Final Perform.		1/2h	Fes. Of Dance Perform.		Strike		
							Final Performance				Festival of Dance Performance					
2/22/10							Restore									
	Estimated Week Total = 10.5 hrs			Week Total = 9hrs			Weekly Average = 26hrs									